

Over 1,500 Architects & Engineers are calling for a new, genuine, independent investigation.

### Architects & Engineers for 9/11 Truth (AE911Truth)

Architects & Engineers for 9/11 Truth is a non-profit corporation, a non-partisan association of architects, engineers, and affiliates dedicated to exposing the falsehoods and revealing truths about the destruction of the 3 World Trade Center high-rises on 9/11/01. Visit our website. Sign our petition. Join us!

### Why We Are Re-Examining the Destruction of the World Trade Center

There was never a proper investigation. NIST and FEMA excluded critical forensic evidence that is described in this and other documents of AE911Truth. We at AE911Truth assess the forensic evidence.

The evidence falsifies the official reports by the 9/11 Commission, FEMA, and NIST (National Institute of Standards and Technology). Every week new architects, engineers, and others join us in our call for a new investigation.

### Learn More at AE911Truth.org

A vast array of information and resources is available on our website, including informative DVDs that feature dynamic multimedia presentations by Richard Gage, AIA, and others.

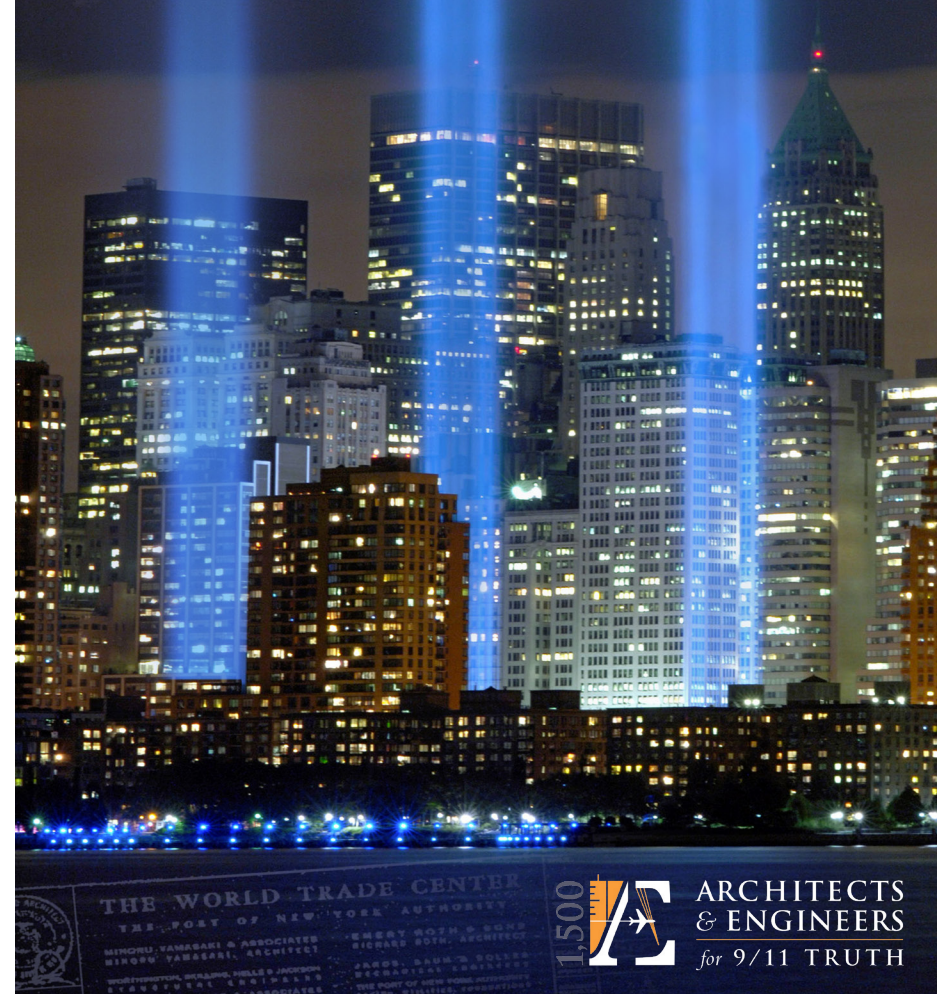


“ AE911Truth exposes NIST falsehoods – A localized failure in a steel-framed building like WTC 7 cannot cause a catastrophic collapse like a house of cards at free-fall acceleration without a simultaneous and patterned loss of several of its columns at key locations within the building. ”  
— Kamal Obeid, PE, Structural Engineer

“ I think we were all shocked when the buildings came down: it just didn't seem right. Richard Gage, AIA, does an excellent job uncovering the problems with the official explanation in a scientific, non-partisan way. It's "An Inconvenient Truth" about 9/11 that everyone should be aware of. Brace yourselves. ”  
— Chris Mungenast, AIA

Over 1,500 Architects & Engineers Reveal:

# What the Media is Not Telling You About 9/11



Visit our website & support us

**AE911Truth.org**

a 501 (c) 3 CA non-profit corporation

2342 Shattuck Avenue, Suite 189, Berkeley, CA 94704

# Trust Your Eyes, the Facts, and the Laws of Physics

WTC

7

World Trade Center Building 7:

A 47-story skyscraper *NOT* hit by an airplane that was the third tower destroyed on September 11th.

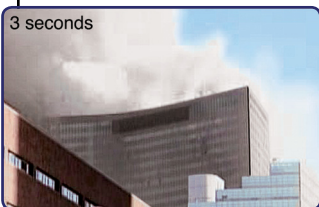
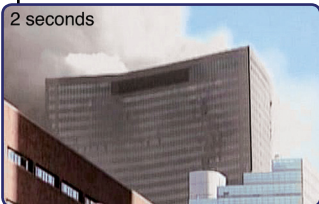
The collapse of WTC 7 has all the characteristics of a **CONTROLLED DEMOLITION** with explosives:

- The building falls almost straight down in about 7 seconds – and at **free-fall acceleration** for 100 feet – confirmed by NIST
- The overall building mass falls uniformly **through what was the path of greatest resistance**. This requires a precisely timed, patterned removal of critical columns.
- The kink in the roofline is characteristic of a **demolition timing sequence** where the walls are collapsing inward symmetrically.

The structure of a large, fireproofed steel-framed building cannot be completely destroyed by **LOCALIZED POCKETS OF FIRE** nor by “thermal expansion” as claimed by NIST.

A single, localized failure (a girder unseated – NIST) could not cause the systematic and total **FAILURE OF 400 OTHER STRUCTURAL STEEL CONNECTIONS PER SECOND**.

**Numerous incidents and recorded statements reveal FOREKNOWLEDGE**. These include a countdown, warnings, and announcements from both CNN and the BBC of the “collapse”... before it happened!



## Evidence Excluded from the NIST Report

- 1 Most of the debris ended up in this compact pile – **centered within the original footprint**.



- 2 The 47-story steel-framed **structure was dismembered** and reduced to a small pile only a few stories high – with complete destruction – unmistakable signs of a controlled demolition with explosives.

- 3 **Extremely high temperatures** far above those of normal office fires, persisted for weeks in the pile, as indicated by various sources (e.g. infrared images by MTI, EarthData and NASA).

- 4 FEMA documented in Appendix C of its report a **“severe high temperature corrosion attack on the steel”** – sulfur and liquid iron penetrated into the steel. Office/jet fuel fires cannot account for this. Other research revealed the signature of thermite, which creates molten iron.



- 5 FEMA’s May 2002 report concluded that its hypothesis that fire caused the destruction had only a “low probability of occurrence” and that “further investigation and analysis were required”, although by that time, almost all WTC 7 steel had already been **removed and destroyed**.

## WTC Twin Towers

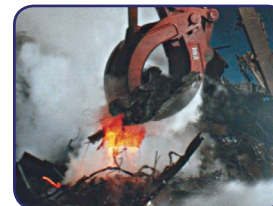
The destruction of WTC 1 & 2 shows typical features of controlled demolition, characteristic features of the use of high explosives, and evidence of the use of thermite.

- 1 The strong steel frames of the lower parts of the buildings would have arrested any collapse. However, the **destruction zone** not only **proceeded symmetrically** downwards but even **accelerated constantly** through what was the path of greatest resistance
- 2 Extremely **rapid onset** of destruction
- 3 Blast pressure front effects: **multi-ton steel sections** ejected laterally up to 600 ft at 50 mph
- 4 **Mid-air pulverization** of 90,000 tons of concrete. Large volumes of metal decking and floor trusses were missing. No “pancaked” floors were found
- 5 Massive volumes of rapidly expanding **pyroclastic-like clouds**
- 6 **High velocity ejections** also seen up to 40 stories below the cascading demolition canopies
- 7 **Complete destruction** of the buildings, shattering of many structural units
- 8 Evidence for **extremely high temperatures** (2800°F) before, during, and after the destruction
- 9 Evidence of **thermite** found in previously molten metal, WTC dust and steel
- 10 Sophisticated, energetic **nanothermite** composite material found in WTC dust samples
- 11 Over one hundred first responders reported **explosions and flashes of light**
- 12 **No precedent** for steel-framed high-rise collapse due to fire

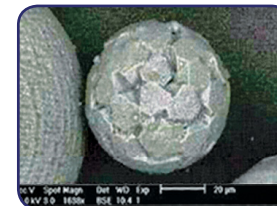


**Heavy pieces were ejected laterally, many of them leaving rapidly expanding dust and smoke trails – a geometry caused by high explosives, not gravitational collapse**

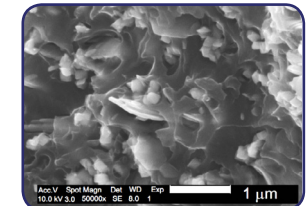
## The Truth is in the Evidence



FDNY and others found several tons of **“molten steel,”** “flowing like lava” in the piles. 1400°F office fires cannot produce 2800+°F molten metal. **Thermite incendiaries** can.



**Microspheres** formed from molten iron and other elements were found in the WTC dust by USGS, the RJ Lee Group, EPA, and independent scientists. Thermite reactions can account for the ubiquitous spheres.



WTC dust samples contain small chips of **highly energetic nanothermite** composite materials – uniformly nano-sized, appropriately proportioned, and embedded in an organic matrix that might have gas-generating properties.