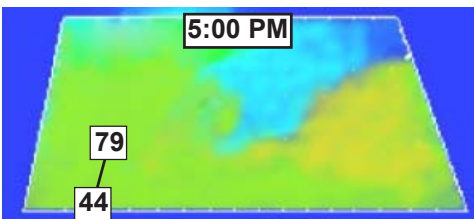
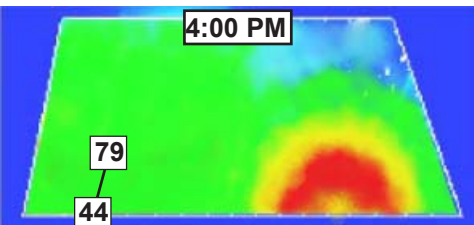
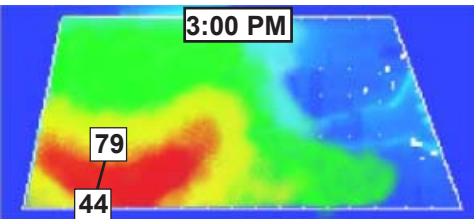
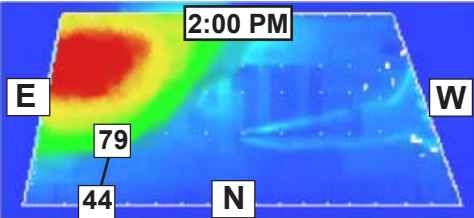


AE911Truth Challenges NIST’s WTC 7 Floor 12 Fire Analysis

Architects and Engineers for 9/11Truth
Submitted by Chris Sarns
Progression of fire on Floor 12 of WTC 7
(consistent with photographs)



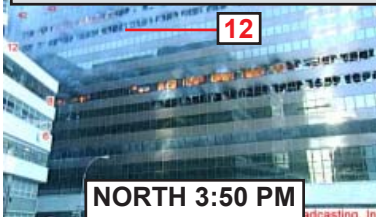
NIST NCSTAR 1-9 Vol. 1 pg. 201



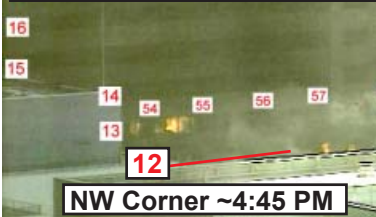
NIST NCSTAR 1-9 Vol. 1 pg. 208



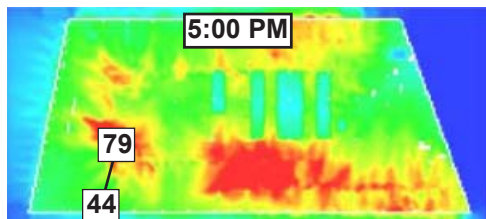
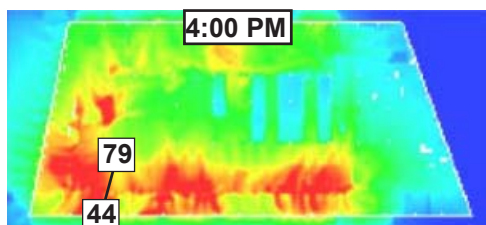
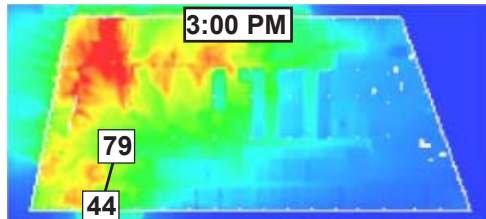
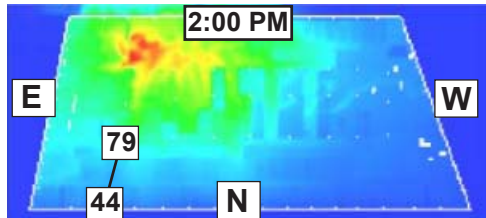
NIST NCSTAR 1-9 Vol. 1 pg. 222



NIST NCSTAR 1-9 Vol. 1 pg. 237



NIST NCSTAR 1-9, Vol. 2, page 383
Figure 9-11. Progression of simulation
fire on Floor 12 of WTC 7.
(NOT consistent with photographs)



According to NIST, the fire on floor 12 caused the girder between columns 79 and 44 under floor 13 to fail at 5:20 PM. Theoretically, this was the beginning of the initiating event that led to the implosion of WTC 7.

On page 383 of NIST NCSTAR 1-9 Vol. 1 (2008), the fire simulations graphic of floor 12 shows the fire burning around column 79 at 4:00 and 5:00 PM. The NIST simulation is not consistent with the photographs of the fire. The photographs show, and the NIST Appendix L report (2004) states “Around 4:45 PM, a photograph showed fires Floors 7, 8, 9, and 11 near the middle of the north face; Floor 12 was burned out by this time.” In fact, it had burned out in the east end before 4:00 PM.

Therefore, the fire on floor 12 could not have caused floor 13 to collapse (at 5:20 PM) and the implosion of WTC 7 could not have occurred as NIST has proposed.